

# TRANGIE SPORTING PRECINCT CONCEPT PLAN



27 MAY 2019

## Document History

- A 05/03/19 Draft for review
- B 27/05/19 Additional options for review



TRANGIE SPORTING PRECINCT - CONCEPT PLAN

MASTER PLAN OPTION A



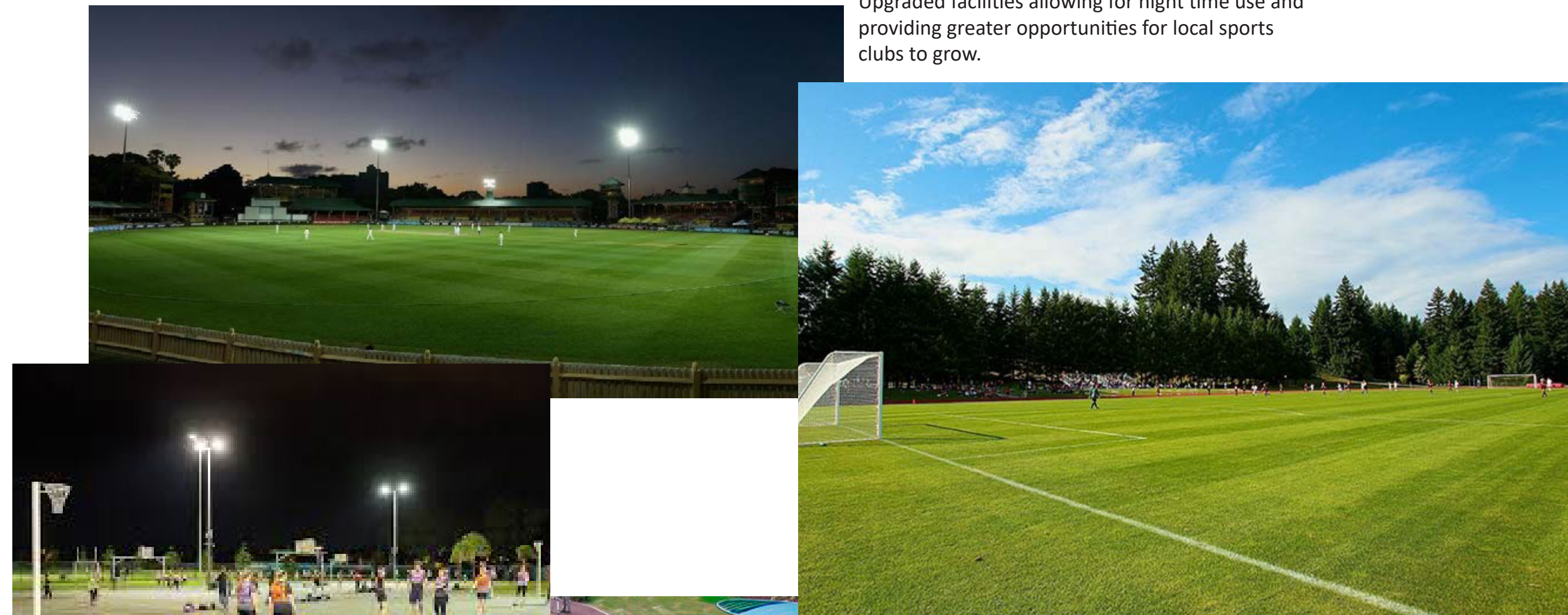
LEGEND

- ① New multi-use court
- ② New netball courts with optional multi-purpose tennis set-up
- ③ Bench seating
- ④ BBQ area with picnic tables and planting. Retain existing BBQ or upgrade
- ⑤ BBQ area with one standard and one accessible BBQ, picnic tables, seating walls, bubbler station, garbage bins and shade trees
- ⑥ Existing skate park to be retained
- ⑦ Playground targeting toddlers to children ~6 years. Equipment to be accessible with shade sail over
- ⑧ Playground targeting children 6+ years. Equipment to be accessible with shade sail over
- ⑨ New 1.8m high fence surrounding oval
- ⑩ Existing pump house to be retained
- ⑪ Re-vegetation zone with informal paths and educational signage
- ⑫ Primary circulation path 2.5m wide, exposed aggregate or coloured concrete
- ⑬ Secondary access path, 2m wide, coloured concrete or similar
- ⑭ New sports lighting
- ⑮ Indicative running track line markings
- ⑯ Exercise stations on primary circulation path
- ⑰ Emergency vehicle access
- ⑱ Upgraded soccer field with numerous field set-up arrangements
- ⑲ New or relocated lighting to soccer field
- ⑳ Low level fencing to road side only of soccer, multi use and netball courts
- ㉑ Upgraded long jump pit with run up
- ㉒ Relocated shot-put and discus rings
- ㉓ Seating hub. Various seating types and arrangements with lighting and shade trees
- ㉔ Central club house including public toilets, function space, amenities, change rooms, storage, canteen and bar
- ㉕ Covered walkway linking new club house to existing tennis club building
- ㉖ Parking bays
- ㉗ Disabled parking
- ㉘ Bus drop off zone
- ㉙ Minibus turning area
- ㉚ Existing tennis club building restored
- ㉛ Existing tennis courts upgraded
- ㉜ Existing lighting upgraded
- ㉝ Mass planting, refer to planting palette
- ㉞ Shade awning over bench seating
- ㉟ Crushed gravel
- ㊱ Covered two tiered seating with accessible areas
- ㊲ Refurbished tennis practice wall
- ㊳ Fencing to tennis courts
- ㊴ Bubbler station
- ㊵ Pole top / solar lighting
- ㊶ Mixed use / event space



# TRANGIE SPORTING PRECINCT - CONCEPT PLAN

## PRECEDENT IMAGES



Upgraded facilities allowing for night time use and providing greater opportunities for local sports clubs to grow.



Image from the Leader



Improved playground and exercise facilities for all community members.



Retain heritage items in park and link to new facilities.



New central sports club house providing a range of amenities to the local community and sporting clubs.



Image by AG Nova Architects



Image by Copland Associates



A range of gathering spaces through out the park for picnics, gatherings and BBQs.



Macquarie University Courtyard by HASSELL



Flexible open space for community events such as markets, fairs or moonlight cinema.





# TRANGIE SPORTING PRECINCT - CONCEPT PLAN

## INDICATIVE MATERIALS PALETTE

### PATHWAYS AND VEHICLE ACCESS



Primary Path - Exposed aggregate concrete



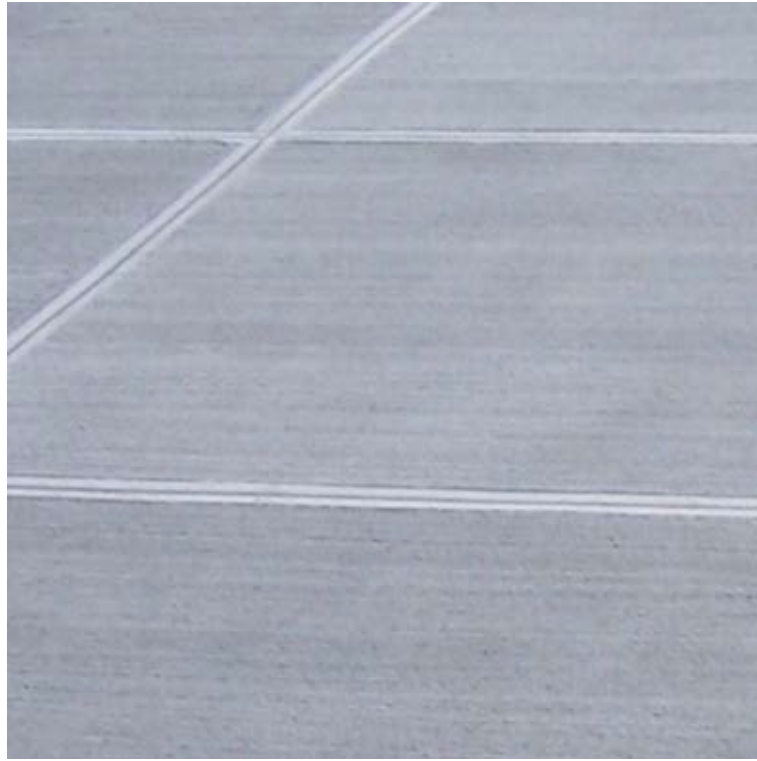
Primary Path - Exposed aggregate concrete



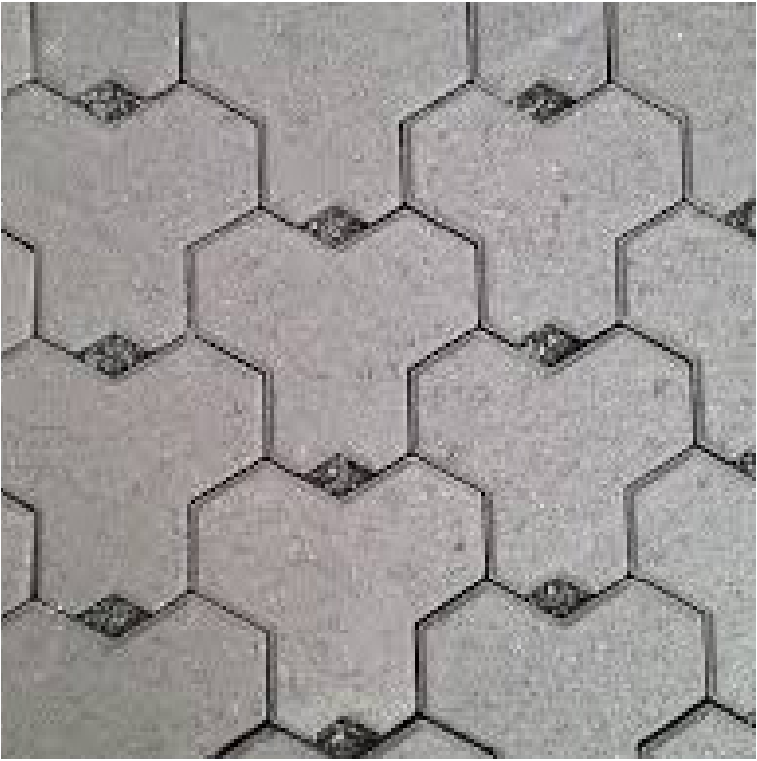
Primary / Secondary Path - Coloured concrete



Primary / Secondary Path - Coloured concrete



Secondary Path - Broom finished concrete



Vehicle areas - Interlocking concrete unit pavers



Vehicle areas - Asphalt



Seating hub - Crushed granite



Playgrounds / exercise stations - Rubber softfall



Playgrounds - Mulch softfall



Planting areas - Mulch

### FURNITURE AND FIXTURES



Seating hub - Chaise seating



Seating hub - Tables and seating walls



Seating hub - Pole top or solar lights



Playgrounds / BBQ areas - Seating walls



BBQ facilities



BBQ areas - Picnic tables



Bubbler



Bench seating



Covered two tired seating



Accessible spaces in tired seating



Sport / flood lighting



Fencing to oval



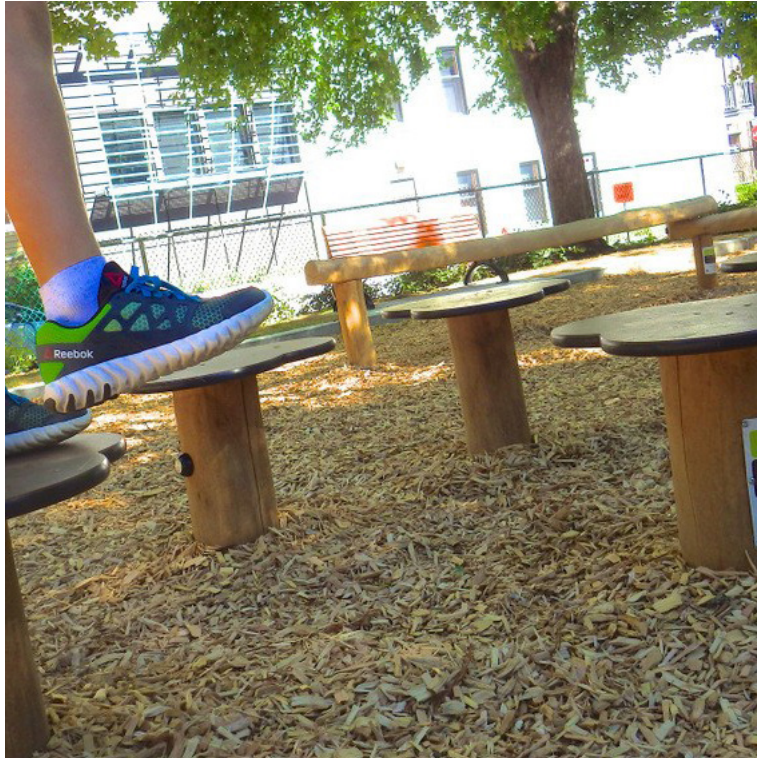
Fencing to tennis courts and rear of netball courts



# TRANGIE SPORTING PRECINCT - CONCEPT PLAN

## INDICATIVE EQUIPMENT SCHEDULE

### PLAYGROUND EQUIPMENT - TODDLER TO 5+ YEARS



Kompan - waterlily balance or similar



Kompan - forest bug rocker or similar



Kompan - playhouse or similar



Kompan - swing set or similar



Kompan - baby swing seat or similar



Bucket swing or similar



Kompan - junior spica or similar

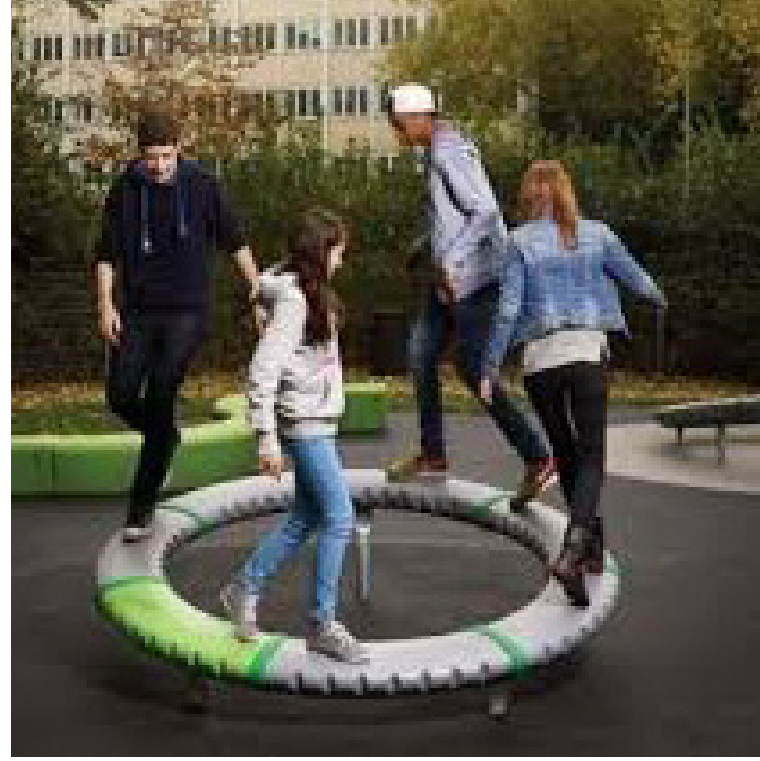
### PLAYGROUND EQUIPMENT - CHILDREN 5+ YEARS



Kompan - rope play or similar



Mound slide



Kompan - supernova or similar



Nature Play



Stone blocks and stepping stones in garden beds



Shade sails



Balance beams

### PLAYGROUND EQUIPMENT GENERAL

### EXERCISE STATIONS



A\_space stretching station



A\_space body pulls and push ups



A\_space sit up station



A\_space leg press



A\_space chest press



A\_space pull ups and leg raises



TRANGIE SPORTING PRECINCT - CONCEPT PLAN

INDICATIVE PLANTING PALETTE

TREES



Corymbia maculata - Spotted Gum



Eucalyptus melliodora - Yellow Box



Eucalyptus sideroxylon - Red Ironbark



Lagerstroemia indica 'Natchez' - White Crepe Myrtle



Pyrus calleryana 'Chanticleer' - Chanticleer Pear



Quercus palustris - Pin Oak



Ulmus parvifolia - Chinese Elm

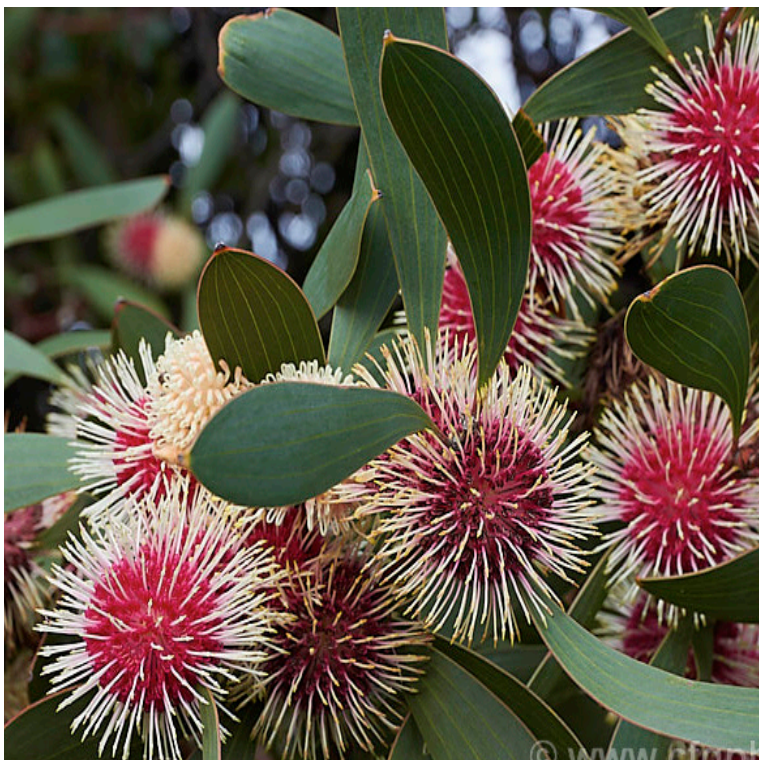
SHRUBS



Chamelaucium uncinatum - Geraldton wax



Doryanthes excelsa - Gynea Lily



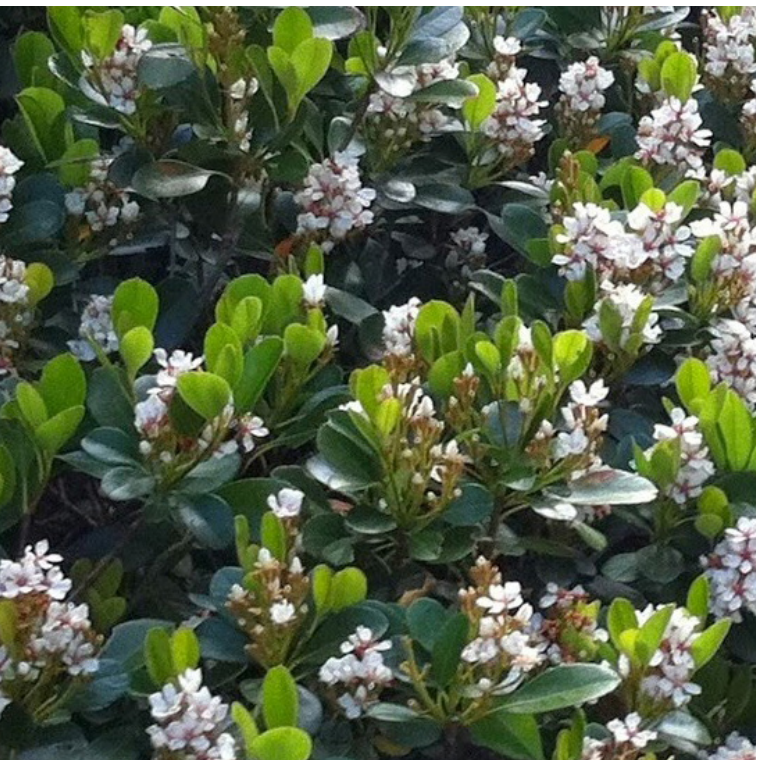
Hakea laurina - Pin Cushion Hakea



Leptospermum flavescens 'Pacific Beauty' - Tea Tree

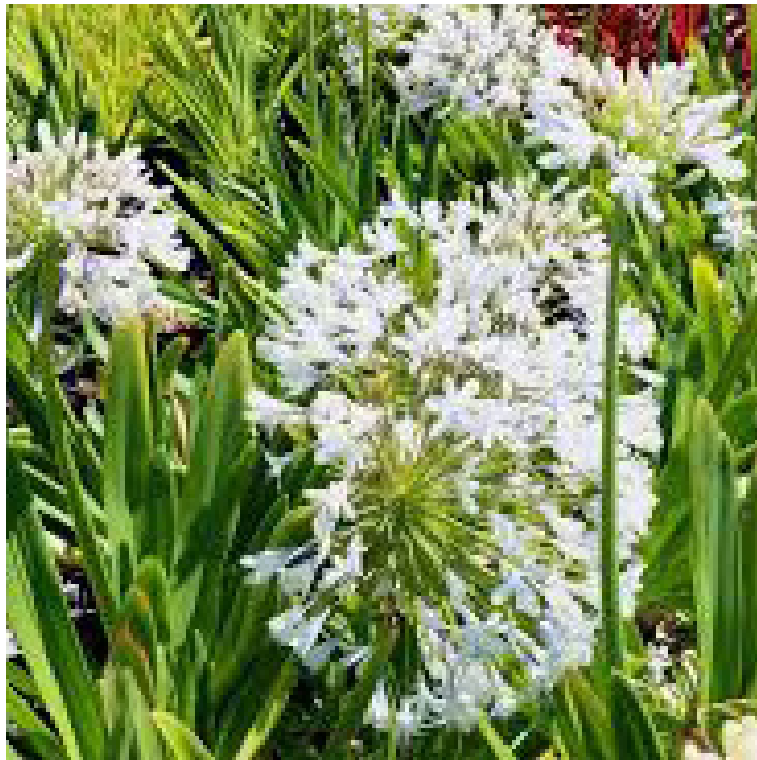


Phormium tenax purpureum - Purple NZ Flax



Raphiolepis indica - Indian Hawthorne

GROUNDCOVERS AND GRASSES



Agapanthus 'Cloudy Days' - Dwarf Agapanthus



Chrysocephalum apiculatum - Common Everlasting



Dianella caerulea 'Breeze' - Dianella



Kennedia coccinea - Coral Vine



Kunzea parvifolia dwarf - Dwarf Tick Bush



Lomandra 'Tanika' - Mat Rush



Pennisetum alopecuroides - Fountain Grass



Poa labillardieri - Tussock Grass



Stachys byzantina - Lambs Ears



Themeda triandra - Kangaroo Grass